

FLOOR PLAN (PH EX)
SCALE: 1/8" = 1'-0"
01

UNIT #1
1,109 S.F.

UNIT #2
1,114 S.F.

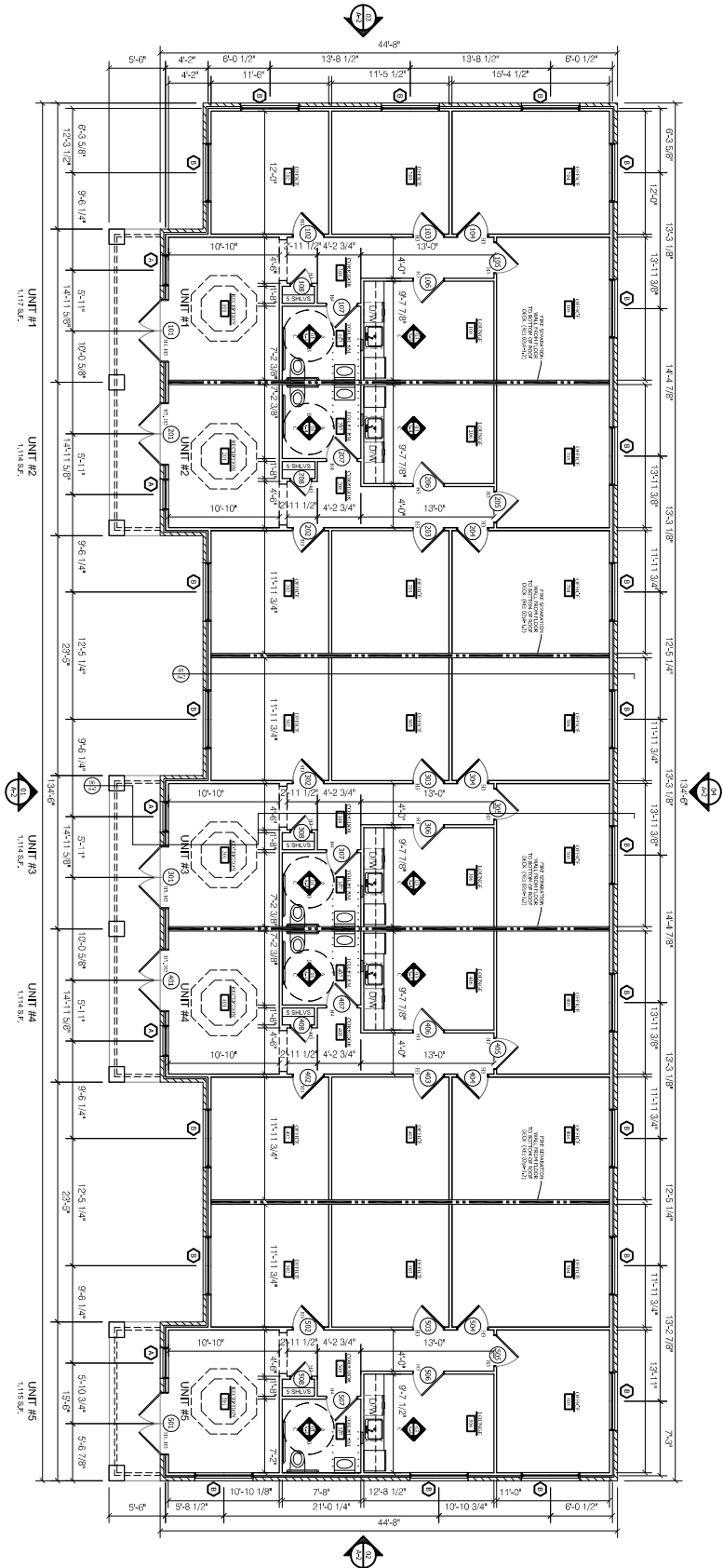
UNIT #3
1,114 S.F.

UNIT #4
1,109 S.F.

NOTE:
SEE PLAN FOR LOUNGE &
REQUIREMENTS.

COPYRIGHT
THESE DOCUMENTS ARE PROTECTED BY UNITED STATES COPYRIGHT LAW. THEY HAVE BEEN PREPARED SPECIFICALLY FOR THE PROJECT IDENTIFIED AND ARE NOT SUITABLE FOR USE ON ANY OTHER PROJECT OR AT ANY OTHER LOCATION WITHOUT THE EXPRESS WRITTEN APPROVAL AND PERMISSION OF THE ARCHITECT. ANY REUSE OF THESE DOCUMENTS WITHOUT THE EXPRESS WRITTEN APPROVAL OF THE ARCHITECT, ALL RIGHTS ARE RESERVED TO VINTAGE DESIGN GROUP, LLC.


A-1	PROPOSED	Date MAY 2013	Scale AS NOTED	Project: HWY 249 HOUSTON, TEXAS	VINTAGE DESIGN GROUP 719 COMMON STREET SHREVEPORT, LA 71101 p318.990.9029 www.VintageDesignGoup.com	OWNER: TOC PROPERTIES 503 SHERWOOD RD SHREVEPORT, LA 71106	
	FLOOR PLAN	Revisions:					



FLOOR PLAN (SP EX)
 SCALE: 1/8" = 1'-0"

NOTE: SEE PLAN FOR LOADING & REINFORCEMENT REQUIREMENTS.

COPYRIGHT
 THESE DOCUMENTS ARE PROTECTED BY UNITED STATES COPYRIGHT LAW. THEY HAVE BEEN PREPARED SPECIFICALLY FOR THE PROJECT IDENTIFIED AND ARE NOT SUITABLE FOR USE ON ANY OTHER PROJECT OR AT ANY OTHER LOCATION WITHOUT THE EXPRESS WRITTEN APPROVAL AND SIGNATURE OF THE ARCHITECT. ANY REUSE OR REPRODUCTION OF THESE DOCUMENTS MUST BE AUTHORIZED BY THE ARCHITECT. ALL RIGHTS ARE RESERVED TO VINTAGE DESIGN GROUP, LLC.

A-1	PROPOSED	Date MAY 2013	Scale AS NOTED	Project:	VINTAGE DESIGN GROUP	OWNER:	 VINTAGE DESIGN GROUP 719 COMMON STREET SHREVEPORT, LA 71101 p318.990.9029 www.VintageDesignGroup.com
	FLOOR PLAN	Revisions:		HWY 249 HOUSTON, TEXAS	719 COMMON STREET SHREVEPORT, LA 71101 p318.990.9029 www.VintageDesignGroup.com	TOC PROPERTIES 503 SHERWOOD RD SHREVEPORT, LA 71106	